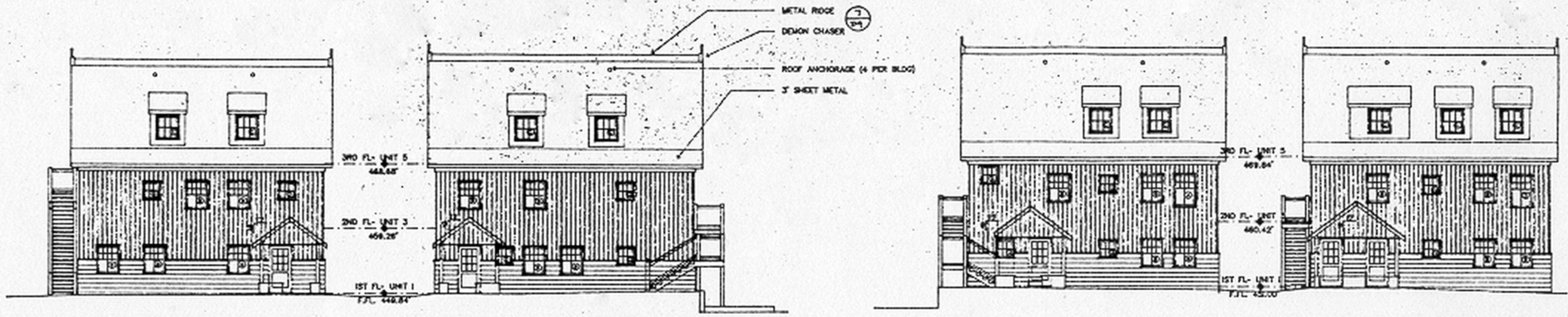


TYPICAL @ WIDE WING



BLDG. II

BLDG. I

BLDG. III

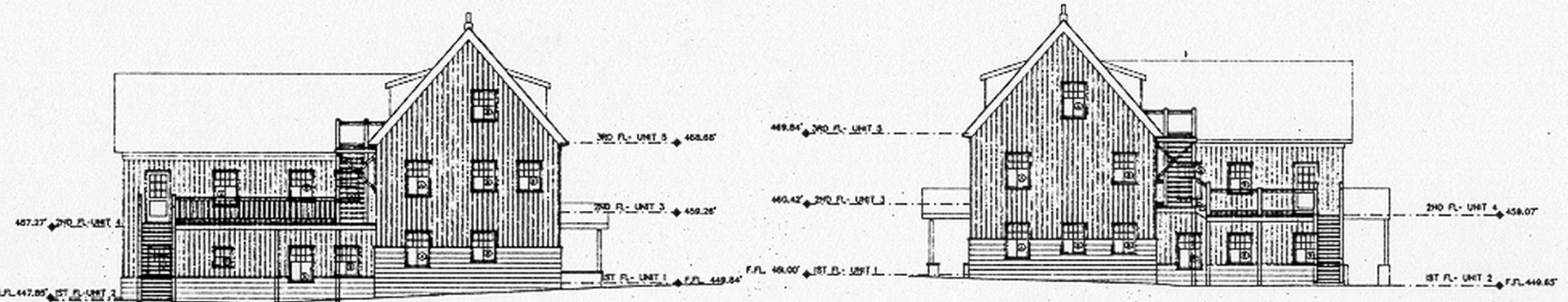
BLDG. IV

EAST ELEVATION - FROM COURTYARD

1/8"=1'-0"

WEST ELEVATION - FROM COURTYARD

1/8"=1'-0"

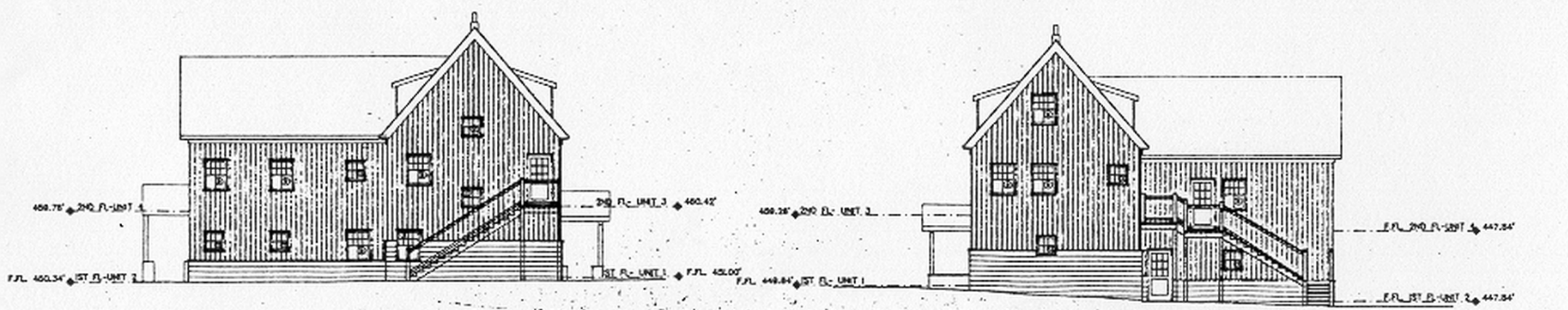


BLDG. I

BLDG. III

SOUTH ELEVATION - FROM COURTYARD

1/8"=1'-0"



BLDG. IV

BLDG. II

NORTH ELEVATION - FROM COURTYARD

1/8"=1'-0"