

WITHIN 2000' OF PARKING SPACES  
 TO MAKE IT EASIER TO GET AND PARK  
 FOR ANYONE.

## LOCAL STORE



OF THE STORE IS IN THE  
 AREA



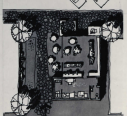
IN RESIDENTIAL AREAS  
 TO MEET TOGETHER  
 TO MEET TOGETHER



MEETING AREAS  
 TO MEET TOGETHER



TO MEET TOGETHER



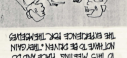
TO MEET TOGETHER



TO MEET TOGETHER



TO MEET TOGETHER



TO MEET TOGETHER



TO MEET TOGETHER



TO MEET TOGETHER



YOU CAN IDENTIFY YOUR HOME



YOUR INDIVIDUALITY  
 IS REFLECTED IN YOUR HOME



NO ONE  
 WANTS TO  
 LIVE IN A

## IDENTIFIABLE HOMES IN MULTIPLE HOUSING

IN MULTIPLE UNIT DWELLING STRUCTURES  
 EACH UNIT CAN BE VISUALLY COMPREHENDED  
 AS A DISCRETE UNIT FROM INSIDE AND FROM  
 OUTSIDE THE BUILDING



YOU CAN PLANT YOUR OWN TREE



## EARTH BALCONY

EVERY APARTMENT UNIT ABOVE GRADE  
 LEVEL HAS A LARGE EXTERIOR BALCONY  
 WHERE TREES AND A GARDEN CAN BE PLANTED

INTEGRATED INTO THE COMMUNITY.



## TRANSIENT SITES

IDEAL ACCOMMODATION FOR PERSONS  
 NEW TO THE CITY AND FOR TRAVELLING TRIPS.  
 MANY RESIDENTIAL AREAS OFFER SPACE  
 FOR PEOPLE LIVING IN TRAILERS, TENTS,  
 PLUMBING AND RECONSTRUCTION ARE PROVIDED.



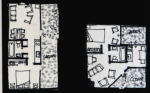
THIS HOUSE HOLDS  
 SEVENTEEN PEOPLE

## GROUP HOUSE

SOME RESIDENTIAL AREAS HAVE  
 CLUSTERS OF GROUP HOUSES WHERE  
 FRIENDS CAN LIVE TOGETHER.



IDEAL FOR SINGLES, OLD PEOPLE, YOUNG COUPLES



MANY PEOPLE WANT A HOUSE WITH A  
 GARDEN RATHER THAN AN APARTMENT.

## URBAN COTTAGES

10% OF URBAN HOUSING IS TINY COTTAGES  
 IN CLUSTERS AMONG TREES AND COURTS  
 OF GREEN



## SINGLE-FAMILY HOUSE

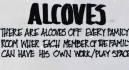
YOU CAN LEAVE YOUR HOBBY TO  
 JOIN A FAMILY DISCUSSION.



THE FAMILY WILL BE  
 TOGETHER EVEN WHEN  
 DOING DIFFERENT THINGS

## FAMILY ROOM ALCOVES

THERE ARE ALCOVES OFF EVERY FAMILY  
 ROOM WHERE EACH MEMBER OF THE FAMILY  
 CAN HAVE HIS OWN WORK/PLAY SPACE



HOUSES CAN BE DESIGNED SO THAT  
 YOU CAN MEET YOUR NEIGHBORS



LESS ISOLATION  
 OF FAMILIES

## FRONT PORCH

EVERY HOUSE HAS A PORCH FRINGING  
 A SIDEWALK OR LOCAL ROAD. PEOPLE  
 MEET AND KNOW THEIR NEIGHBORS.



PRIVATE AREAS  
 ARE ISOLATED

## SEE-THROUGH LIVING ROOM

TO ENCOURAGE "DROPPING IN" EVERY  
 HOME HAS A ROOM WHICH IS OPEN  
 TO THE STREET



FRIENDS DRIVING BY WILL STOP AND VISIT